



BOSS

TRAILER PRODUCTS

2023 Product Catalog

CONTENTS



2023 PRODUCT CATALOG.....	1
SWING TONGUE PARTS.....	3
AXLE HANGERS.....	4
AXLE HANGERS.....	5
AXLE MOUNTING HARDWARE.....	6
LEAF SPRINGS.....	7
SPRING HARDWARE.....	8
SQUARE U-BOLTS – COMING SOON!.....	9
LINK PLATES.....	10
EQUALIZERS.....	11
L-BEND BUNK BRACKETS.....	12
SWIVEL BUNK BRACKETS.....	13
SPINDLES.....	14
SPINDLE PARTS.....	15
DUST CAPS.....	16
HUB KITS.....	17
HUB ASSEMBLIES COMPLETE.....	18
10” DRUM BRAKE.....	19
9.6” DISC BRAKE.....	20
10” DISC BRAKE.....	21
COUPLERS & ACTUATORS.....	22
BRAKE HOSE COMPONENTS.....	23
SWING AWAY JACKS.....	24
DROP LEG JACKS.....	25
WINCHES.....	26
FENDERS - PLASTIC.....	27

SWING TONGUE PARTS



Swing Tongue Plate (Weld-On)

Plate, Hinge Swing Tongue Hole
Diameter: .631-.636"
Hole Centers: 4.50"
Plate Size: 4.62" x 5.90" x .31"

BOSS PN: PLST6550P

In-Stock Now



Swing Tongue Pin, Grade 8

Pivot Pin for 4" Swing Tongue Hinge
Diameter: .620"-.625"
Length: 5 1/2" Nominal Length
Includes Pin and Lanyard

BOSS PN: PST6502ZN

In-Stock Now



Swing Tongue Pin

Pivot Pin for 5" Swing Tongue Hinge
Diameter: .620"-.625"
Length: 6 1/2" Nominal Length
Includes Pin and Lanyard

BOSS PN: PST6503ZN

In Stock Now- Limited Supply

AXLE HANGERS



Mini Hanger with Sleeve
For Spring Rear
2" x 2" overall size
1.25" from top to hole center
1.76" outer width
Use with BUS6000N Bushing
BOSS PN: AH6001P
In-Stock Now



Bushing, for Mini Hanger
For Spring Rear
1.75" Nylon x .95" OD
.75" ID (for 9/16 bolt)

Use with AH6001P Hanger
BOSS PN: BUS6000N
In-Stock Now



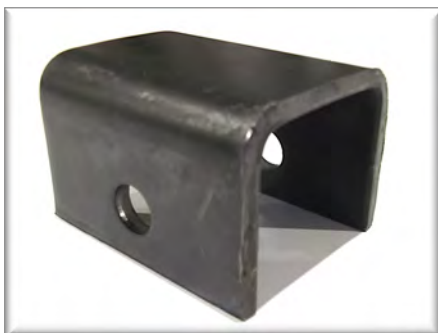
Spring Hanger, for 1 3/4" Springs
3" wide by 3 7/8" tall
3.25" from top to hole center
1.89" inner width

BOSS PN: AH6005P
In-Stock Now



Mini Hanger, for 1 3/4" Springs
For Spring Rear
3" wide by 2.20" tall
1.25" from top to hole center
1.81" outer width

BOSS PN: AH6014P
In-Stock Now



Spring Hanger, for 1 3/4" Springs
3" wide by 2" tall
1.44" from top to hole center
1.89" inner width
Cross Reference 28-6

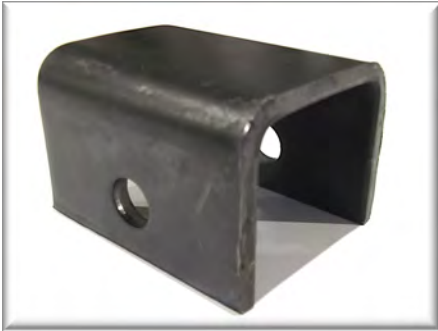
BOSS PN: AH6018P
In Stock Now



Mini Hanger, for 1 3/4" Springs
For Spring Rear
1.5" wide x 2.25" tall
1" from top to hole center
Cross reference 93003

BOSS PN: AH6019P
In Stock Now

AXLE HANGERS



Spring Hanger, for 1 3/4" Springs
3" wide by 2" tall
1.50" from top to hole center
1.89" inner width

BOSS PN: AH6020P
In-Stock Now

AXLE MOUNTING HARDWARE



Plain Finish

Shackle Bolt, 9/16"
 9/16" x 3.00" Grade 5
 Zinc Plated
 BOSS PN: BSK5008ZN
 In-Stock Now

Shackle Bolt, 9/16"
 9/16" x 3.00" Grade 5
 Plain Finish
 BOSS PN: BSK5009P
 In-Stock Now

Zinc Plated



Shackle Bolt, 9/16"
 9/16" x 3.50" Grade 5
 Zinc Plated
 BOSS PN: BSK5010ZN
 In-Stock Now

Shackle Bolt, 9/16"
 9/16" x 3.50" Grade 5
 Plain Finish
 BOSS PN: BSK5011P
 In-Stock Now

3 1/2" Length



9/16" Locknut
 9/16-18 Grade 2
 Top-Lock Nut
 Zinc Plated
 BOSS PN: NSL5051ZY
 In-Stock Now

9/16" Locknut
 9/16-18 Grade 2
 Top-Lock Nut
 Plain Finish
 BOSS PN: NSL5050P
 In-Stock Now



Top-Side Lock Nut



7/16 Step Down

Shackle Bolt, 7/16" Step-Down
 7/16" x 2.895" Grade 5 Zinc
 Plated
 BOSS PN: BSK5007ZN
 In-Stock Now

7/16" Flanged Locknut
 7/16-20 Grade 2 Flanged Top
 Lock Nut Zinc Plated
 BOSS PN: NFTL5056ZN
 In-Stock Now



Automation Lock Nut

9/16" Automation Locknut
 9/16-18 Grade 2
 Top-Lock Nut
 Zinc Plated
 BOSS PN: NAL5060ZN
 In-Stock Now

LEAF SPRINGS



Leaf Spring, Double Eye (SW4B)

4 Leaf, 25.25" Eye-to-Eye 1,750lb
Capacity Per Spring Black Finish
Also known as: UNA-212, PR4B, 72-42

BOSS PN: SPR2200B
In-Stock Now

Leaf Spring, Double Eye (SW5)

5 Leaf, 25.25" Eye-to-Eye 3,000lb
Capacity Per Spring Black Finish
Also known as: UNA-111, PR5

BOSS PN: SPR2201B
In-Stock Now

Leaf Spring, Double Eye (SW3B)

3 Leaf, 25.25" Eye-to-Eye 1,250lb
Capacity Per Spring Black Finish
Also known as: UNA-219, 72-22

BOSS PN: SPR2202B
In-Stock – Limited Quantity

Leaf Spring, Double Eye (SW4)

4 Leaf, 25.25" Eye-to-Eye 2,500lb
Capacity Per Spring Black Finish
Also known as: UNA-218, PR4, 72-25

BOSS PN: SPR2203B
In-Stock – Limited Quantity

**Boss Trailer Products will
expand our spring offering
based on demand**

SPRING HARDWARE



Spring Seat
2" Square Tube

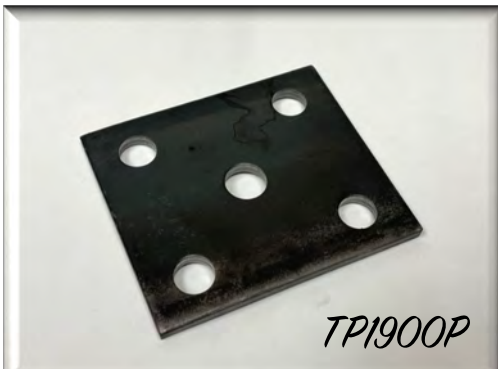
BOSS PN: SS1450P
In-Stock Now

Spring Seat
2 3/8" Round Tube

BOSS PN: SS1451P
In Stock Now

Spring Seat
1 7/8" Round Tube

BOSS PN: SS1452P
In Stock Now



Tie Plate, Plain (for 2" square tube)
3.5" x 4" x .25"

BOSS PN: TP1900P
In-Stock Now



Tie Plate, Zinc (for 2 3/8" Round tube)

BOSS PN: TP1905P
In-Stock Now



Tie Plate, Zinc (for 2" square tube)
3.5" x 4" x .25"

BOSS PN: TP1901ZN
In-Stock Now

SQUARE U-BOLTS



U-Bolt, Square

Thread Size: 5/16" to 1/2"

Width: .81" to 6.12"

Length: 2" to 9"

Thread Length: Varies

Packaged: TBD Quantity,

Roughly 40lb Boxes

Finish: Zinc CR3+

Material: Low Carbon Steel

BOSS PN: UBT5500ZN to 5599ZN

In-Stock Now

Please ask Boss Trailer Products for a complete list of U-Bolts, Washers and Nylon Locknuts!

BOSS Part Number	Description	A Dimension (THREAD SIZE)	B Dimension (WIDTH INSIDE)	C Dimension (LENGTH INSIDE)	D Dimension (THREAD LENGTH)	Carton Quantity	In-Stock Status
UBT-5500ZN	U-BOLT 5/16-18 x 1.56 x 2.25"	5/16"-18	1.56" +/- .03	2.25" +.06/-00	1.00" +.13/-00	TBD	In stock Mid December
UBT-5501ZN	U-BOLT 5/16-18 x 1.56 x 3.25"	5/16"-18	1.56" +/- .03	3.25" +.06/-00	1.00" +.13/-00	TBD	In stock Mid December
UBT-5520ZN	U-BOLT 3/8-16 x .81 x 2.00"	3/8"-16	.81" +/- .03	2.00" +.06/-00	1.00" +.13/-00	TBD	In stock Mid December
UBT-5521ZN	U-BOLT 3/8-16 x 1.56 x 2.38"	3/8"-16	1.56" +/- .03	2.38" +.06/-00	1.25" +.13/-00	TBD	In stock Mid December
UBT-5522ZN	U-BOLT 3/8-16 x 1.56 x 3.38"	3/8"-16	1.56" +/- .03	3.38" +.06/-00	2.50" +.13/-00	TBD	In stock Mid December
UBT-5523ZN	U-BOLT 3/8-16 x 2.06 x 3.00"	3/8"-16	2.06" +/- .03	3.00" +.06/-00	1.50" +.13/-00	TBD	In stock Mid December
UBT-5524ZN	U-BOLT 3/8-16 x 2.06 x 4.00"	3/8"-16	2.06" +/- .03	4.00" +.06/-00	2.00" +.13/-00	TBD	In stock Mid December
UBT-5525ZN	U-BOLT 3/8-16 x 3.06 x 3.00"	3/8"-16	3.06" +/- .03	3.00" +.06/-00	1.50" +.13/-00	TBD	In stock Mid December
UBT-5526ZN	U-BOLT 3/8-16 x 3.06 x 4.00" (3x3" Tongue)	3/8"-16	3.06" +/- .03	4.00" +.06/-00	1.75" +.13/-00	TBD	In stock Mid December
UBT-5527ZN	U-BOLT 3/8-16 x 4.06 x 3.00" (2x4" Rail)	3/8"-16	4.06" +/- .03	3.00" +.06/-00	1.25" +.13/-00	TBD	In stock Mid December
UBT-5528ZN	U-BOLT 3/8-16 x 4.06 x 4.00" (3x4" Tongue)	3/8"-16	4.06" +/- .03	4.00" +.06/-00	1.25" +.13/-00	TBD	In stock Mid December
UBT-5529ZN	U-BOLT 3/8-16 x 5.06 x 3.00"	3/8"-16	5.06" +/- .03	3.00" +.06/-00	1.25" +.13/-00	TBD	In stock Mid December
UBT-5530ZN	U-BOLT 3/8-16 x 5.06 x 4.00" (3x5" Tongue)	3/8"-16	5.06" +/- .03	4.00" +.06/-00	1.25" +.13/-00	TBD	In stock Mid December
UBT-5540ZN	U-BOLT 7/16-14 x 1.81 x 2.25"	7/16"-14	1.81" +/- .03	2.25" +.06/-00	1.25" +.13/-00	TBD	In stock Mid December
UBT-5541ZN	U-BOLT 7/16-14 x 3.12 x 4.25"	7/16"-14	3.12" +/- .03	4.25" +.06/-00	1.50" +.13/-00	TBD	In stock Mid December
UBT-5542ZN	U-BOLT 7/16-14 x 4.12 x 3.00"	7/16"-14	4.12" +/- .03	3.00" +.06/-00	2.00" +.13/-00	TBD	In stock Mid December
UBT-5560ZN	U-BOLT 1/2-13 x 2.06 x 3.13"	1/2"-13	2.06" +/- .03	3.13" +.06/-00	1.00" +.13/-00	TBD	In stock Mid December
UBT-5561ZN	U-BOLT 1/2-13 x 2.06 x 4.00"	1/2"-13	2.06" +/- .03	4.00" +.06/-00	2.00" +.13/-00	TBD	In stock Mid December
UBT-5562ZN	U-BOLT 1/2-13 x 2.06 x 4.50"	1/2"-13	2.06" +/- .03	4.50" +.06/-00	2.00" +.13/-00	TBD	In stock Mid December
UBT-5563ZN	U-BOLT 1/2-13 x 2.06 x 5.50"	1/2"-13	2.06" +/- .03	5.50" +.06/-00	1.50" +.13/-00	TBD	In stock Mid December
UBT-5564ZN	U-BOLT 1/2-13 x 2.06 x 6.50"	1/2"-13	2.06" +/- .03	6.50" +.06/-00	2.00" +.13/-00	TBD	In stock Mid December
UBT-5565ZN	U-BOLT 1/2-13 x 2.06 x 7.50"	1/2"-13	2.06" +/- .03	7.50" +.06/-00	1.50" +.13/-00	TBD	In stock Mid December
UBT-5566ZN	U-BOLT-1/2-13 x 2.12 x 5.00"	1/2"-13	2.12" +/- .03	5.00" +.06/-00	2.00" +.13/-00	TBD	In stock Mid December
UBT-5567ZN	U-BOLT-1/2-13 x 2.12 x 5.50"	1/2"-13	2.12" +/- .03	5.50" +.06/-00	2.00" +.13/-00	TBD	In stock Mid December
UBT-5568ZN	U-BOLT 1/2-13 x 3.06 x 1.25"	1/2"-13	3.06" +/- .03	1.25" +.06/-00	.75" +.13/-00	TBD	In stock Mid December
UBT-5569ZN	U-BOLT 1/2-13 x 3.06 x 3.25"	1/2"-13	3.06" +/- .03	3.25" +.06/-00	1.50" +.13/-00	TBD	In stock Mid December
UBT-5570ZN	U-BOLT 1/2-13 x 3.06 x 4.25"	1/2"-13	3.06" +/- .03	4.25" +.06/-00	1.50" +.13/-00	TBD	In stock Mid December
UBT-5571ZN	U-BOLT 1/2-13 x 3.06 x 5.25"	1/2"-13	3.06" +/- .03	5.25" +.06/-00	1.50" +.13/-00	TBD	In stock Mid December
UBT-5572ZN	U-BOLT 1/2-13 x 3.06 x 5.75"	1/2"-13	3.06" +/- .03	5.75" +.06/-00	1.50" +.13/-00	TBD	In stock Mid December
UBT-5573ZN	U-BOLT 1/2-13 x 3.06 x 6.50"	1/2"-13	3.06" +/- .03	6.50" +.06/-00	1.50" +.13/-00	TBD	In stock Mid December
UBT-5574ZN	U-BOLT 1/2-13 x 3.06 x 7.25"	1/2"-13	3.06" +/- .03	7.25" +.06/-00	1.63" +.13/-00	TBD	In stock Mid December
UBT-5575ZN	U-BOLT 1/2-13 x 3.06 x 8.00"	1/2"-13	3.06" +/- .03	8.00" +.06/-00	1.50" +.13/-00	TBD	In stock Mid December
UBT-5576ZN	U-BOLT 1/2-13 x 3.06 x 9.00"	1/2"-13	3.06" +/- .03	9.00" +.06/-00	1.50" +.13/-00	TBD	In stock Mid December
UBT-5577ZN	U-BOLT 1/2-13 x 3.12 x 3.00"	1/2"-13	3.12" +/- .03	3.00" +.06/-00	2.00" +.13/-00	TBD	In stock Mid December
UBT-5578ZN	U-BOLT 1/2-13 x 3.12 x 5.25"	1/2"-13	3.12" +/- .03	5.25" +.06/-00	2.00" +.13/-00	TBD	In stock Mid December
UBT-5579ZN	U-BOLT 1/2-13 x 3.12 x 6.50"	1/2"-13	3.12" +/- .03	6.50" +.06/-00	2.00" +.13/-00	TBD	In stock Mid December
UBT-5580ZN	U-BOLT-1/2-13 x 3.12 x 3.25"	1/2"-13	3.12" +/- .03	3.25" +.06/-00	1.50" +.13/-00	TBD	In stock Mid December
UBT-5581ZN	U-BOLT-1/2-13 x 3.12 x 4.25"	1/2"-13	3.12" +/- .03	4.25" +.06/-00	1.50" +.13/-00	TBD	In stock Mid December
UBT-5582ZN	U-BOLT 1/2-13 x 4.06 x 3.25"	1/2"-13	4.06" +/- .03	3.25" +.06/-00	1.50" +.13/-00	TBD	In stock Mid December
UBT-5583ZN	U-BOLT 1/2-13 x 4.12 x 3.00"	1/2"-13	4.12" +/- .03	3.00" +.06/-00	2.00" +.13/-00	TBD	In stock Mid December
UBT-5584ZN	U-BOLT 1/2-13 x 5.06 x 3.25"	1/2"-13	5.06" +/- .03	3.25" +.06/-00	1.50" +.13/-00	TBD	In stock Mid December
UBT-5585ZN	U-BOLT 1/2 x 5.12 x 4 3/4" (3x5" Rail)	1/2"-13	5.12" +/- .03	4.75" +.06/-00	1.50" +.13/-00	TBD	In stock Mid December
UBT-5586ZN	U-BOLT 1/2 x 6.12 x 4 3/4" (3x6" Rail)	1/2"-13	6.12" +/- .03	4.75" +.06/-00	1.50" +.13/-00	TBD	In stock Mid December

LINK PLATES



Plain Finish



Zinc Plated

Link Plate 1.25" Wide, Plain Finish

2.75" Hole Centers
BOSS PN: LP2055P
In-Stock Now

3.13" Hole Centers
BOSS PN: LP2057P
In-Stock Now

4.00" Hole Centers
BOSS PN: LP2060P
In-Stock Now

5.25" Hole Centers
BOSS PN: LP2062P
In-Stock Now

Link Plate, 1.25" Wide, Zinc Finish

2.56" Hole Centers
BOSS PN: LP2063ZN
In-Stock Now

2.75" Hole Centers
BOSS PN: LP2056ZN
In-Stock Now

3.13" Hole Centers
BOSS PN: LP2058ZN
In-Stock Now

3.75" Hole Centers
BOSS PN: LP2059ZN
In-Stock Now

4.00" Hole Centers
BOSS PN: LP2061ZN
In-Stock Now

EQUALIZERS



EQ-104
Equalizer, EQ-104 Black

BOSS PN: EQ2004B
In-Stock Now



EQ-104
Equalizer, EQ-104 Galvanized

BOSS PN: EQ2001G
In-Stock Now



EQ-310
Equalizer, EQ-310 Black

BOSS PN: EQ2002B
In-Stock Now



EQ-310
Equalizer, EQ-310 Galvanized

BOSS PN: EQ2003G
In-Stock Now



EQ-E1
Equalizer, EQ-E1 Black

BOSS PN: EQ2005B
In-Stock Now

L-BEND BUNK BRACKETS



Bent Strap, 3"
1/4" thick steel, 3" wide
BOSS PN: BB6403P
In-Stock Now!

Bent Strap, 4"
1/4" thick steel, 3" wide
BOSS PN: BB6404P
In-Stock Now!

Bent Strap, 5"
1/4" thick steel, 3" wide
BOSS PN: BB6405P
In-Stock Now!

Bent Strap, 6"
1/4" thick steel, 3" wide
BOSS PN: BB6406P
In-Stock Now!

Bent Strap, 7"
1/4" thick steel, 3" wide
BOSS PN: BB6407P
In-Stock Now!

Bent Strap, 8"
1/4" thick steel, 3" wide
BOSS PN: BB6408P
In-Stock Now!

Bent Strap, 9"
1/4" thick steel, 3" wide
BOSS PN: BB6409P
In-Stock Now!

Bent Strap, 10"
1/4" thick steel, 3" wide
BOSS PN: BB6410P
In-Stock Now!

Bent Strap, 11"
1/4" thick steel, 3" wide
BOSS PN: BB6411P
In-Stock Now!

Bent Strap, 13"
1/4" thick steel, 3" wide
BOSS PN: BB6412P
In-Stock Now!

SWIVEL BUNK BRACKETS



2" X 3" Swivel Top (#114)
2" Tall, 1.25" Leg, 3" Wide
Drilled for 3/8" Lag / 1/2" Bolt
1/8" Thickness
Galvanized

BOSS PN: BB6400G
In-Stock Now!



1.5" X 3.5" Swivel Top
2" Tall, 1.5" Leg, 3.5" Wide Drilled for
3/8" Fasteners 3/16" Thickness
Zinc Plated

BOSS PN: BB6414ZN
In-Stock Now!



2" X 3.5" Swivel Top (#114)
2" Tall, 2" Leg, 3.5" Wide Drilled
for 3/8" Fasteners 1/8"
Thickness Galvanized

BOSS PN: BB6401G
In-Stock Now!



1.5" x 4 7/8" Swivel Top
2.25" Tall, 1.75" Leg, 4.88" Wide
Drilled for 3/8" Fasteners 1/8"
Thickness Galvanized

BOSS PN: BB6402G
In-Stock Now!

SPINDLES



Spindle, Straight Forged 1750lb
For use with 2 3/8" Round Tube Brake
Flange Forged

BOSS PN: SPS1200F
In-Stock Now

Spindle, Straight Forged 1750lb – Less Grease Zerk
For use with 2 3/8" Round Tube Brake
Flange Forged

BOSS PN: SPS1200NZF
In-Stock Now



Spindle, Drop Forged 1750lb
For use with 2" Square or 2" x 3"
Rectangle Tube
Brake Flange Forged 5 1/2"
Drop

BOSS PN: SPD1202W
In-Stock Now

SPINDLE PARTS



Castle Nut, 12-Slot
Nut, Castle, Spindle 1"

BOSS PN: NSP1700
In-Stock Now



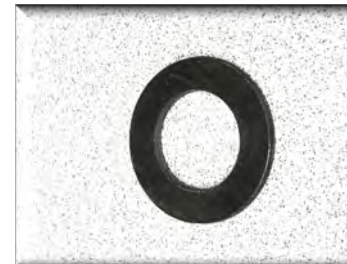
Castle Nut, 6-Slot
Nut, Castle, Spindle 1"

BOSS PN: NSP1701
In-Stock Now



Bearing, Inner
L68149

BOSS PN: BRG1500
In-Stock Now, Limited Supply



Washer Washer,
Spindle ID: 1"
OD: 2"
BOSS PN: WSP1800
In-Stock Now



Cotter Pin
.156" Diameter
2.00" Long

BOSS PN: PC1850
In-Stock Now, Limited Supply



Grease Seal
171255TC

BOSS PN: GS1550
In-Stock Now, Limited Supply



Bearing, Outer
L44649

BOSS PN: BRG1501
In-Stock Now, Limited Supply

DUST CAPS



Dust Cap, 2" Zinc with Hole
Use on 1.98" Dia Hole (1750lb Hubs, 10" Drums) Use with DC1600 Rubber Plug

BOSS PN: DC1601ZN
In-Stock Now



Dust Cap, 2" Zinc
Use on 1.98" Dia Hole (1750lb Hubs, 10" Drums)

BOSS PN: DC1603ZN
In-Stock Now



Dust Cap Rubber Plug
Use with DC1601ZN
EPDM Rubber – UV & Grease Stable

BOSS PN: DC1600
In-Stock Now



Dust Cap, Aluminum
2 5/16" thread
Black Aluminum Finish
Use for BOSS or Dexter Vortex Hubs

BOSS PN: DC1602BA
In-Stock Now

HUB KITS



Hub Sub Assembly

1750lb Idler Hub

5 Bolt, 4 ½" Hole Pattern Inner

Bearing = L68149

Outer Bearing = L44649

Seal = 171255TC

For use with tapered spindle

BOSS PN: HUBS1003B

In-Stock Now

HUB ASSEMBLIES COMPLETE



Hub Assembly

1750lb Idler Hub
Inner Bearing = L68149
Outer Bearing = L44649 Seal
= 171255TC
Weld-On to 2 3/8" Round Axle Pre-
Greased w/ Zinc Cap

BOSS PN: HUBA1003BZ
In-Stock Now



Hub Assembly

1750lb Idler Hub
Inner Bearing = L68149
Outer Bearing = L44649
Seal = 171255TC
Weld-On to 2 3/8" Round Axle
Pre-Greased w/ Alum Threaded Cap

BOSS PN: HUBA1004BA
In-Stock Now



Hub Assembly, Drop Axle

1750lb Idler Hub
Inner Bearing = L68149
Outer Bearing = L44649
Seal = 171255TC
Weld-On to 2" Square or 2 3/8" Rect
Tube
Pre-Greased w/ Zinc Cap

BOSS PN: HUBA1009BZ
In-Stock Limited Quantities

10" DRUM BRAKE



Brake Drum, 10"
Cast Iron, Black Painted
1750lb Capacity
9/16-18 Studs

BOSS PN: HUBD1008B
In-Stock Now

10" Hydraulic Backing Plate
Free-Backing, Large Adjustor No
mounting studs

Left Orientation:
BOSS PN: BPH1300B

Right Orientation:
BOSS PN: BPH1301B
In-Stock Now

9.6" DISC BRAKE



Rotor, 9.6"
Cast Iron, Black Painted
1750lb Capacity
Slip-Over Design

BOSS PN: TBD
Coming Soon!

9.6" Caliper, Two Banjo
Single Piston Caliper-
black-painted aluminum body.

One Bleeder, One Banjo Fitting
BOSS PN: CA1103B
In-Stock Now

Two Banjo Fittings
BOSS PN: CA1102B
In-Stock Now



10" DISC BRAKE



Rotor, 10"

Cast Iron, Black Painted
1750lb Capacity
Slip-Over Design

BOSS PN: HUBR1006B
In-Stock Now

10" Caliper, Two Banjo

Single Piston Caliper- black-
painted aluminum body.

One Bleeder, One Banjo Fitting
BOSS PN: CA1101B
In-Stock Now

Two Banjo Fittings
BOSS PN: CA1100B
In-Stock Now



COUPLERS & ACTUATORS



Coupler, Class 2 for 3" Tongue
Zinc Plated

BOSS PN: CPS3300ZN
In-Stock Now

Coupler, Class 3 for 3" Tongue
Zinc Plated

BOSS PN: CPS3301ZN
In-Stock Now



Coupler, Class 2 for 3" Tongue
Plain Finish- Bolt or Weld On

BOSS PN: CPS3302P
In-Stock Now

Coupler, Class 3 for 3" Tongue
Plain Finish- Bolt or Weld On

BOSS PN: CPS3303P
In-Stock Now



Brake Actuator, Drum Brake
6600lb capacity Black
Wrinkle Finish

BOSS PN: ACT3001B
In-Stock Now

Brake Actuator, Disc Brake
6600lb capacity Black
Wrinkle Finish
With Backup Solenoid

BOSS PN: ACT3000B
In-Stock Now

Brake Actuator, Drum Brake
6600lb capacity Zinc
Plated Finish

BOSS PN: ACT3004B
In-Stock Now

Brake Actuator, Disc Brake
6600lb capacity Zinc
Plated Finish
With Backup Solenoid

BOSS PN: ACT3003B
In-Stock Now

BRAKE HOSE COMPONENTS

Assembly Tool Required – Build your own Lines!



Fitting, Brass, Line Adaptor
3/8-24 Hex

BOSS PN: BF5002BR
In-Stock Now



Adaptor, Drum
3/8-24 Hex

BOSS PN: BF5004BR
In-Stock Now



Sleeve, Brass
1/8" ID

BOSS PN: BF5001BR
In-Stock Now



Brake Hose, Per Foot SAE
J1481 Certified 1/8" ID

BOSS PN: BH5000
In Stock Now



Collar, Brass
Male

BOSS PN: BF5003BR
In-Stock Now

SWING AWAY JACKS



Jack, Swing Away 1000lb
Bolt-On, Snap Ring to Swivel
6" Wheel Zinc Plated

BOSS PN: JSA3050ZN
In-Stock Now



Jack, Swing Away 1200lb
Bolt-On, Four Bolt to Swivel
6" Wheel Zinc Plated

BOSS PN: JSA3051ZN
In-Stock Now

Jack, Swing Away 1200lb
Bolt-On, Four Bolt to Swivel
6" Wheel BLACK FINISH

BOSS PN: JSA3057B
Available January



Jack, Swing Away 1500lb Bolt-On,
Four Bolt to Swivel
8" Wheel Zinc Plated

BOSS PN: JSA3052ZN
In-Stock Now



Jack, Swing Away 1200lb
Weld-On, Four Bolt to Swivel
6" Wheel Zinc Plated

BOSS PN: JSA3054ZNNW
In-Stock Now



Jack, Swing Away 1500lb
Weld-On, Four Bolt to Swivel
8" Wheel Zinc Plated

BOSS PN: JSA3055ZNNW
In-Stock Now



Jack, Swing Away 1500lb
Weld-On, Four Bolt to Swivel
6" Double Wheel Zinc Plated

BOSS PN: JSA3056ZNNW
In-Stock Now

DROP LEG JACKS

Jack, Drop Leg 2500lb
Bolt-On
Zinc Pinned Foot
Zinc Plated

BOSS PN: JDL3080ZN
In-Stock Now

Jack, Drop Leg 5000lb
Bolt-On
Zinc Pinned Foot
Zinc Plated

BOSS PN: JDL3081ZN
In-Stock Now

Jack, Drop Leg 5000lb
Weld-On
Zinc Pinned Foot
Black Painted

BOSS PN: JDL3086B
In-Stock Now



WINCHES



Winch, 900lb
With 14' Strap
Zinc Plated
BOSS PN: WN3201ZN
In-Stock Now

Winch, 900lb
NO Strap
Zinc Plated
BOSS PN: WN3201ZNLS
In-Stock – Limited Qty

Winch, 1500lb
With 20' Strap
Zinc Plated
BOSS PN: WN3205ZN
In-Stock Now

Winch, 1500lb
With 20' Strap
BLACK wrinkle finish
BOSS PN: WN3204B
In-Stock Now

Winch, 1800lb
With 20' Strap
Zinc Plated
BOSS PN: WN3209ZN
In-Stock Now

Winch, 2600lb
With 33' Strap
Two Speed
Zinc Plated
BOSS PN: WN3214ZN
In-Stock Now

Winch, 3200lb
With 33' Strap
Two Speed with Brake
Zinc Plated
BOSS PN: WN3213ZN
In-Stock Now

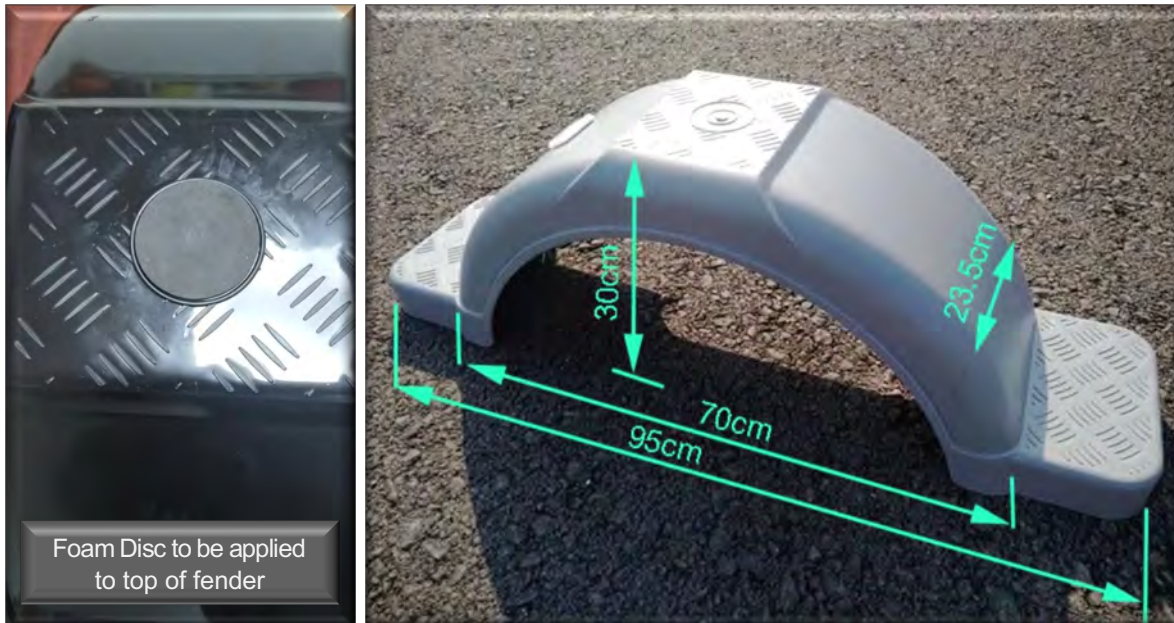
Winch, 3700lb
With 33' Strap
Two Speed with Brake
Zinc Plated
BOSS PN: WN3215ZN
In-Stock Now

FENDERS - PLASTIC



Fender, 13" Standard with Steps
Gloss Black, Polypropylene

BOSS PN: FEN7050B
Available Mid January



The Boss Trailer Product 13" fender is the first of a line of fenders, made from durable, long lasting Black Polypropylene.

Over 80" Applications Fender
Lights will work on the radius. Shown
is the Optronics MCL10/MCL11 style
of light with a 3/4" drilled hole.

