



BOSS

TRAILER PRODUCTS

2026 Product Catalog

All items in catalog subject to change without notice

AXLE HANGERS



Hangers below are for use with 1 3/4" Leaf Springs



Spring Hanger
3" wide by 3 7/8" tall
3.25" from top to hole center
1.89" inner width
Cross Reference 28-5

BOSS PN: AH6005P



Spring Hanger
3" wide by 2" tall
1.44" from top to hole center
1.89" inner width
Cross Reference 28-6

BOSS PN: AH6018P



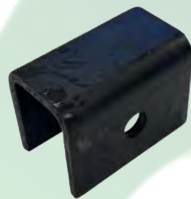
Spring Hanger
3" wide by 2" tall
1.50" from top to hole center
1.89" inner width
Cross Reference 115917

BOSS PN: AH6020P



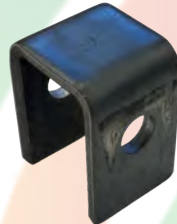
Spring Hanger
3" wide by 4 3/8" tall
3.62" from top to hole center
1.89" inner width
Cross Reference 29-31

BOSS PN: AH6021P



Mini Hanger for Spring Rear
3" wide by 2.20" tall
1.25" from top to hole center
1.81" outer width
Cross Reference HR-06

BOSS PN: AH6014P



Mini Hanger
For Spring Rear
1.5" wide x 2.25" tall
1" from top to hole center
Cross reference 93003

BOSS PN: AH6019P



Mini Hanger w/ Bushing
1.50" wide by 2 1/4" tall
1.00" from top to hole center
1.35" inner width
Cross Reference 30-20

BOSS PN: AH6022P

Mini Hanger with Sleeve
2" wide by 2" tall
1.25" from top to hole center
1.76" outer width
Requires BUS6000N Bushing
BOSS PN: AH6001P

Bushing, for Mini Hanger
.75" ID (for 9/16 bolt)
BOSS PN: BUS6000N



AXLE MOUNTING HARDWARE



Shackle Bolt, 9/16"
9/16" x 3.00" Grade 5
Compare to 007-003
Zinc Plated
BOSS PN: BSK5008ZN
Plain Finish
BOSS PN: BSK5009P

Shackle Bolt, 9/16"
9/16" x 3.50" Grade 5
Compare to 007-017
Zinc Plated
BOSS PN: BSK5010ZN
Plain Finish
BOSS PN: BSK5011P



9/16" Locknut
9/16-18 Grade 2
Top/Side-Lock Nut
Compare to 006-007
Zinc Plated
BOSS PN: NSL5051ZN
Plain Finish
BOSS PN: NSL5050P



9/16" Automation Locknut
9/16-18 Grade 2
Top Lock Nut
Zinc Plated
BOSS PN: NAL5060ZN
Plain Finish
BOSS PN: NAL5059P



Shackle Bolt, 7/16" Step Down
9/16" shaft
7/16-20 x 2.895" Grade 5
Compare to 007-126
Zinc Plated
BOSS PN: BSK5007ZN
Plain Finish
BOSS PN: BSK5006P



7/16" Locknut
7/16-20 Grade 2
Flanged Top Lock Nut
Compare to 006-092
Zinc Plated
BOSS PN: NFTL5056ZN



Equalizer Bolt, 7/8"
7/8-9 x 4.71" w/ Grease Zerk
Plain Finish
Compare to 007-001-01
BOSS PN: BSK5014P

7/8" Locknut
7/8-9 Grade B
Side Lock Nut
Zinc Plated
Compare to 006-111
BOSS PN: NSL5053ZN

AXLE HANGER / AP KITS

Single Axle AP Kit

- Link Plates, 3.12"
- 7/16 Step Down Shackle Bolts
- Link Plate Assy, 3.12" with 7/16 S/D Bolts
- Flanged Lock Nuts

Compare to **A/P 122**
BOSS PN: SAPK5970P



Tandem Axle AP Kit

- Link Plates, 2.25"
- 7/16 Step Down Shackle Bolts
- Link Plate Assy, 2.25" with 7/16 S/D Bolts
- Flanged Lock Nuts
- EQ-104 Equalizers

Compare to **A/P 233**
BOSS PN: TAPK5969P



Tandem Axle AP Kit

- Link Plates, 2.25"
- 7/16 Step Down Shackle Bolts
- Link Plate Assy, 2.25" with 7/16 S/D Bolts
- Flanged Lock Nuts
- EQ-E1 Equalizers

Compare to **A/P 264**
BOSS PN: TAPK5969P



Single Axle Hanger Kit

- Hangers, 3.25" (AH6005P)
- Hangers, Mini, 1.00" (AH6022P)

Compare to **HGR-104**
BOSS PN: SAHK6070P



Tandem Axle Hanger Kit

- Hangers, 3.25" (AH6005P)
- Hangers, 3.62" (AH6021P)

Compare to **HGR-248**
BOSS PN: TAHK6069P

Kits come boxed individually packed but can be packaged in bulk for production.

LINK PLATES



Plain Finish

Link Plate 1.25" Wide, Plain Finish

2.25" Hole Centers
BOSS PN: LP2051P

2.75" Hole Centers
BOSS PN: LP2055P

3.13" Hole Centers
BOSS PN: LP2057P

4.00" Hole Centers
BOSS PN: LP2060P

5.25" Hole Centers
BOSS PN: LP2062P



Zinc Plated

Link Plate, 1.25" Wide, Zinc Finish

2.56" Hole Centers
BOSS PN: LP2063ZN

2.75" Hole Centers
BOSS PN: LP2056ZN

3.13" Hole Centers
BOSS PN: LP2058ZN

3.75" Hole Centers
BOSS PN: LP2059ZN

4.00" Hole Centers
BOSS PN: LP2061ZN

CAST EQUALIZERS



EQ-104
Equalizer, EQ-104 Black

BOSS PN: EQ2004B



EQ-310
Equalizer, EQ-310 Black

BOSS PN: EQ2002B



EQ-E1
Equalizer, EQ-E1 Black

BOSS PN: EQ2005B

NEW! EQ-E1 – POWDER COATED

Powder Coated Black Finish
Extra Durability

BOSS PN: EQ2005B-P



EQ-104
Equalizer, EQ-104 Galvanized

BOSS PN: EQ2001G



EQ-310
Equalizer, EQ-310 Galvanized

BOSS PN: EQ2003G

LEAF SPRINGS



Leaf Spring, Double Eye (SW4B)

4 Leaf, 25.25" Eye-To-Eye
1750lb Capacity Per Spring
Black Finish
Also known as: UNA-212, PR4B, 72-42

BOSS PN: SPR2200B

Leaf Spring, Double Eye (SW5)

5 Leaf, 25.25" Eye-To-Eye
3000lb Capacity Per Spring
Black Finish
Also known as: UNA-111, PR5

BOSS PN: SPR2201B

Leaf Spring, Double Eye (SW3B)

3 Leaf, 25.25" Eye-To-Eye
1250lb Capacity Per Spring
Black Finish
Also known as: UNA-219, 72-22

BOSS PN: SPR2202B

Leaf Spring, Double Eye (SW4)

4 Leaf, 25.25" Eye-To-Eye
2500lb Capacity Per Spring
Black Finish
Also known as: UNA-218, PR4, 72-25

BOSS PN: SPR2203B



**Boss Trailer Products
will expand our spring
offering based on
demand**

SPRING HARDWARE

Spring Seats Plain Finish



2" Square Tube
BOSS PN: SS1450P

2 3/8" Round Tube
BOSS PN: SS1451P

1 7/8" Round Tube
BOSS PN: SS1452P



Tie Plate, for 2" Square Tube Axle
3.5" x 4" x .25"

Plain Finish
BOSS PN: TP1900P

Zinc Plated
BOSS PN: TP1901ZN



Tie Plate, for 1 7/8" Tube

Plain Finish
BOSS PN: TP1902P



Tie Plate, for 2 3/8" Round Tube

Zinc Plated
BOSS PN: TP1905ZN

SQUARE U-BOLTS

U-Bolt, Square

Thread size: 5/16" to 1/2"

Width: .81" to 6.12"

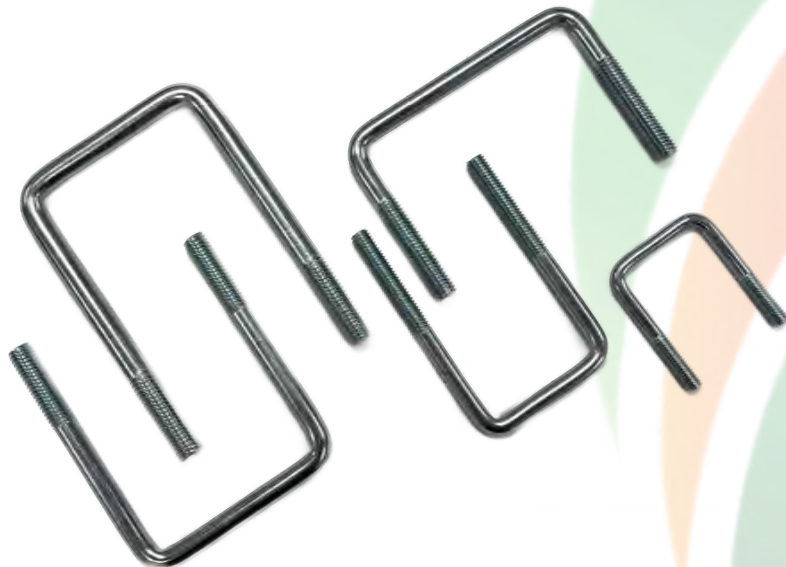
Length: 2" to 9"

Thread Length: Varies

Packaging: Approx 40lb Boxes

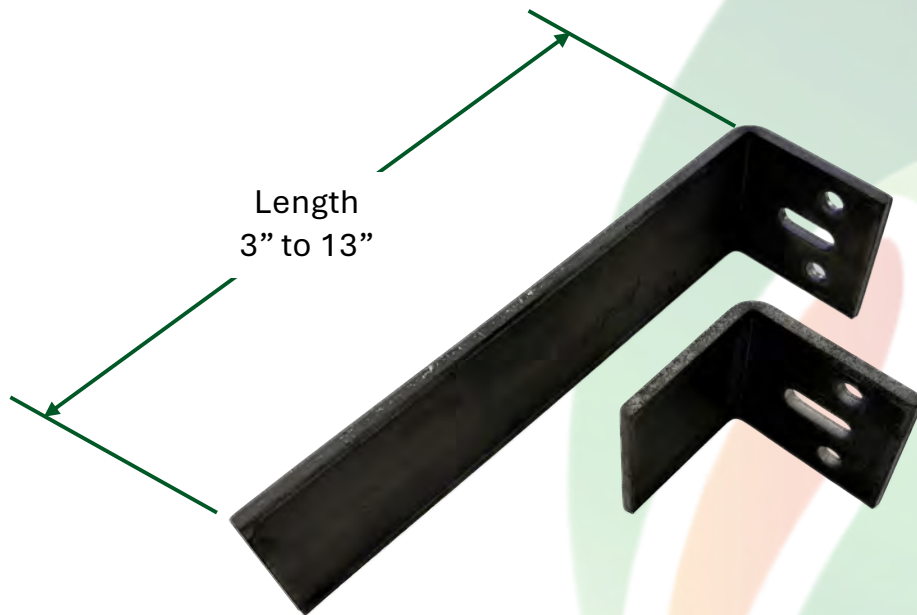
Finish: Zinc CR3+

BOSS PN: UBT5500ZN to 5599ZN



BOSS Part Number	Description	Carton Qty
UBT5500ZN	U-BOLT 5/16-18X1 1/2X2 1/4"	350/Carton
UBT5501ZN	U-BOLT 5/16-18X1 1/2X3 1/4"	250/Carton
UBT5520ZN	U-BOLT 3/8 X 3/4 X 2	250/Carton
UBT5521ZN	U-BOLT 3/8-16X1 1/2X2 3/8"	200/Carton
UBT5522ZN	U-BOLT 3/8-16X1 1/2X3 3/8"	175/Carton
UBT5523ZN	U-BOLT 3/8-16 X 2 X 3"	175/Carton
UBT5524ZN	U-BOLT 3/8 X 2 X 4	150/Carton
UBT5525ZN	U-BOLT 3/8-16X3X3"	150/Carton
UBT5526ZN	U-BOLT 3/8-16X3X4"	125/Carton
UBT5527ZN	U-BOLT 3/8-16X4X3"	150/Carton
UBT5528ZN	U-BOLT 3/8-16X4X4"	125/Carton
UBT5529ZN	U-BOLT 3/8-16X5X3"	125/Carton
UBT5530ZN	U-BOLT 3/8-16X5X4"	100/Carton
UBT5540ZN	U-BOLT 7/16-14 X 1 13/16 X 2 1/4"	150/Carton
UBT5560ZN	U-BOLT 1/2-13X2X3 1/8"	100/Carton
UBT5561ZN	U-BOLT 1/2-13 X 2 X 4"	75/Carton
UBT5562ZN	U-BOLT 1/2-13X2X4 1/2"	75/Carton
UBT5563ZN	U-BOLT 1/2-13X2X5 1/2"	50/Carton
UBT5564ZN	U-BOLT 1/2 X 2 X 6 1/2	50/Carton
UBT5565ZN	U-BOLT 1/2 X 2X 7 1/2	40/Carton
UBT5568ZN	U-BOLT 1/2-13X3X1 1/4"	125/Carton
UBT5569ZN	U-BOLT 1/2-13X3X3 1/4"	75/Carton
UBT5570ZN	U-BOLT 1/2 X 3 X 4 1/4	50/Carton
UBT5571ZN	U-BOLT 1/2-13X3X5 1/4"	50/Carton
UBT5572ZN	U-BOLT 1/2-13X3X5 3/4"	50/Carton
UBT5573ZN	U-BOLT 1/2-13X3X6 1/2"	50/Carton
UBT5574ZN	U-BOLT 1/2 X 3 X 7 1/4	40/Carton
UBT5575ZN	U-BOLT 1/2 X 3 X 8	40/Carton
UBT5576ZN	U-BOLT 1/2 X 3 X 9	40/Carton
UBT5582ZN	U-BOLT 1/2 X 4 X 3 1/4	70/Carton
UBT5584ZN	U-BOLT 1/2-13X5X3 1/4"	60/Carton
UBT5585ZN	U-BOLT 1/2 X 5 X 4 3/4"	50/Carton
UBT5587ZN	U-BOLT 1/2-13 x 2 x 8"	50/Carton

L-BEND BUNK BRACKETS



Bent Strap, 3"
¼" thick steel, 3" wide
BOSS PN: BB6403P

Bent Strap, 4"
¼" thick steel, 3" wide
BOSS PN: BB6404P

Bent Strap, 5"
¼" thick steel, 3" wide
BOSS PN: BB6405P

Bent Strap, 6"
¼" thick steel, 3" wide
BOSS PN: BB6406P

Bent Strap, 7"
¼" thick steel, 3" wide
BOSS PN: BB6407P

Bent Strap, 8"
¼" thick steel, 3" wide
BOSS PN: BB6408P

Bent Strap, 9"
¼" thick steel, 3" wide
BOSS PN: BB6409P

Bent Strap, 10"
¼" thick steel, 3" wide
BOSS PN: BB6410P

Bent Strap, 11"
¼" thick steel, 3" wide
BOSS PN: BB6411P

Bent Strap, 13"
¼" thick steel, 3" wide
BOSS PN: BB6412P

SWIVEL BUNK BRACKETS

2" X 3" Swivel Top (#114)

2" Tall, 1.25" Leg, 3" Wide
Drilled for 3/8" Lag / 1/2" Bolt
1/8" Thickness
Galvanized

BOSS PN: BB6400G



2" X 3.5" Swivel Top

2" Tall, 2" Leg, 3.5" Wide
Drilled for 3/8" Fasteners
1/8" Thickness
Galvanized

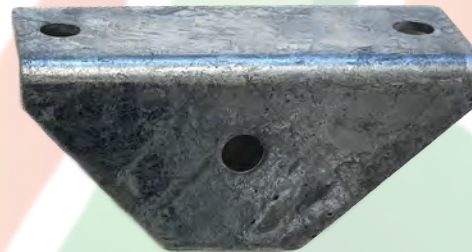
BOSS PN: BB6401G



1.5" x 4 7/8" Swivel Top

2.25" Tall, 1.75" Leg, 4.88" Wide
Drilled for 3/8" Fasteners
1/8" Thickness
Galvanized

BOSS PN: BB6402G



1.5" X 3.5" Swivel Top

2" Tall, 1.5" Leg, 3.5" Wide
Drilled for 3/8" Fasteners
3/16" Thickness
Zinc Plated

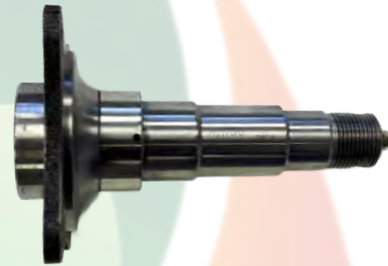
BOSS PN: BB6414ZN



SPINDLES

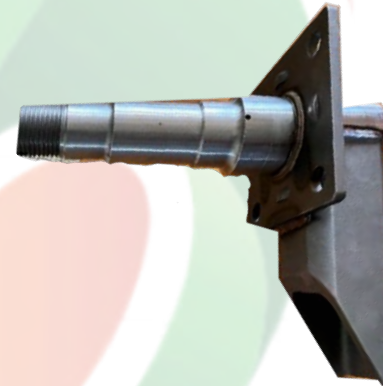


Spindle, Straight BT16 1250lb
Comes with Nut, Washer & Cotter
Pin
BOSS PN: SPS1209-NWC



Spindle, Straight Forged 1750lb
For use with 2 3/8" Round Tube
Brake Flange Forged
BOSS PN: SPS1200F

Available without grease zerk
BOSS PN: SPS1200NZF



Spindle, Drop Forged 1750lb
For use with 2" Square or 2" x 3"
Rectangle Tube
Brake Flange Forged
5 1/2" Drop

BOSS PN: SPS1201DF

Boss Trailer Products produces custom spindles- just ask us!

SPINDLE PARTS



Castle Nut 1-14 Thread
Spindle Nut, 12 Slot
For Center Drilled Spindles
Compare to 006-176
BOSS PN: NSP1700



Castle Nut 1-14 Thread
Spindle Nut, 6 Slot
For Offset Drilled Spindles
Compare to 006-001
BOSS PN: NSP1701



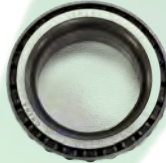
Jam Nut 1-14 Thread
Spindle Nut
Compare to 006-191-00
BOSS PN: NSP1702



Cotter Pin
.156 x 2", use w/12 Slot Castle Nut
BOSS PN: PC1850
.125 x 1.75", use w/6 Slot Castle Nut
BOSS PN: PC1851



Bearing, L44649
For 1250lb Hubs and 1750lb Outer
BOSS PN: BRG1501



Bearing, L68149
For 1750lb Inner
BOSS PN: BRG1500



Grease Seal, 171255TC
For 1750lb Tapered Spindle
BOSS PN: GS1550



Spindle Washer, 1"
1" ID, 1.69" OD – 1010 Steel
Compare to 005-027
BOSS PN: WSP1800



Spindle Washer, D-Style
1" ID
Compare to 005-023
BOSS PN: WSP1801

DUST CAPS



Dust Cap, 2" Zinc with Hole
Use on 1.98" Dia Hole
(1750lb Hubs, 10" Drums)
Use with DC1600 Rubber Plug

BOSS PN: DC1601ZN



Dust Cap, 2" Zinc
Use on 1.98" Dia Hole
(1750lb Hubs, 10" Drums)

BOSS PN: DC1603ZN



Dust Cap Rubber Plug
Use with DC1601ZN
Made from EPDM rubber

BOSS PN: DC1600



Dust Cap, 2.44" Zinc
Use on 2.44" Dia Hole
(3000lb Hubs, 12" Drums)

BOSS PN: DC1605ZN



Dust Cap, Aluminum
2 5/16" thread
Black Aluminum Finish

Direct replacement for Vortex Cap
#K71-G01-73

BOSS PN: DC1602BA

LUG NUTS



WHEEL NUT, 1/2-20 CONE

Zinc Plated
1/2-20 thread
60° Cone, 13/16 Hex
Compare to 006-080
BOSS PN: NW1702ZN



WHEEL NUT, 9/16-18 CONE

Zinc Plated
9/16-18 thread
60° Cone, 7/8 Hex
Compare to 363895
BOSS PN: NW1721ZN



WHEEL NUT, 5/8-18 CONE

Zinc Plated
5/8-18 thread
90° Cone
Compare to 363698
BOSS PN: NW1722ZN



ACORN WHEEL NUT, 1/2-20

Chrome Plated (not capped)
1/2-20 thread
60° Cone, 3/4 Hex
Overall Length 1 3/8"
BOSS PN: NW1730CP



FLANGED WHEEL NUT, 5/8-18

Two-Piece Swivel, Grade 8
5/8-18 thread
1 1/16 HEX
Compare to 006-209
BOSS PN: NW1735PH

HUB SUB ASSEMBLIES



Hub Sub Assembly
1000lb Idler Hub with bearings and seal installed:
Inner Bearing = L44649
Outer Bearing = L44649
Seal = 12192TB
For use with straight BT8 spindle
Four on 4" pattern

BOSS PN: HUBS1010B



Hub Sub Assembly
1750lb Idler Hub with bearings and seal installed:
Inner Bearing = L68149
Outer Bearing = L44649
Seal = 171255TC
For use with tapered 84 spindle
Five on 4 1/2" pattern

BOSS PN: HUBS1003B



Hub Sub Assembly
1250lb Idler Hub with bearings and seal installed:
Inner Bearing = L44649
Outer Bearing = L44649
Seal = 12192TB
For use with straight BT8 spindle
Five on 4 1/2" pattern

BOSS PN: HUBS1000B



Hub Sub Assembly
3000lb Idler Hub with bearings and seal installed:
Inner Bearing = 25520
Outer Bearing = 15245
Seal = 22333TB
For use with tapered 42 spindle
Six on 5 1/2" pattern

BOSS PN: HUBS1011B

Boss Trailer Products hubs come with bearings and seal installed. A plastic cap on each end protects and retains.

HUB ASSEMBLIES COMPLETE



Hub Assembly

1750lb Idler Hub
Inner Bearing = L68149
Outer Bearing = L44649
Seal = 171255TC
Weld-On to 2 3/8" Round Axle
Pre-Greased w/ Zinc Cap

BOSS PN: HUBA1003BZ



Hub Assembly

1750lb Idler Hub
Inner Bearing = L68149
Outer Bearing = L44649
Seal = 171255TC
Weld-On to 2 3/8" Round Axle
Pre-Greased w/ Alum Threaded Cap

BOSS PN: HUBA1004BA



Hub Assembly, Drop Axle

1750lb Idler Hub
Inner Bearing = L68149
Outer Bearing = L44649
Seal = 171255TC
Weld-On to 2" Square or 2 3/8"
Rect Tube
Pre-Greased w/ Zinc Cap
BOSS PN: HUBA1009BZ

HYDRAULIC DRUM BRAKES



Brake Drum, 10"

Cast Iron, Black Painted
1750lb Capacity
½-20 Studs
Bearings and seal installed:
Inner Bearing = L68149
Outer Bearing = L44649
Seal = 171255TC
For use with tapered spindle

BOSS PN: HUBD1008B

10" Hydraulic Backing Plate

Free-Backing, Large Adjustor
Studs NOT installed

Left Orientation:
BOSS PN: BPH1300B

Right Orientation:
BOSS PN: BPH1301B



Brake Drum, 12"

Cast Iron, Black Painted
3000lb Capacity
½-20 Studs
Bearings and seal installed:
Inner Bearing = 25580
Outer Bearing = 15123
Seal = 22333TB
For use with tapered spindle

BOSS PN: HUBD1009B

12" Hydraulic Backing Plate

Free-Backing, Large Adjustor
Studs installed

Left Orientation:
BOSS PN: BPH1304B
Available Soon

Right Orientation:
BOSS PN: BPH1305B
Available Soon

ELECTRIC DRUM BRAKES



Brake Drum, 10"

Cast Iron, Black Painted
1750lb Capacity
½-20 Studs
Bearings and seal installed:
Inner Bearing = L68149
Outer Bearing = L44649
Seal = 171255TC
For use with tapered spindle

BOSS PN: HUBD1008B

10" Electric Backing Plate

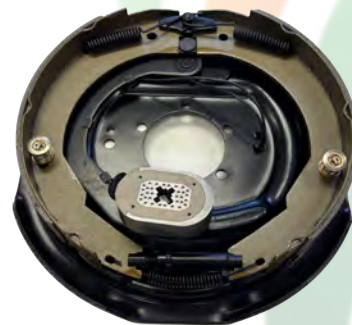
Free-Backing
Studs installed

Left Orientation:

BOSS PN: BPE1302B

Right Orientation:

BOSS PN: BPE1303B



Brake Drum, 12"

Cast Iron, Black Painted
3000lb Capacity
½-20 Studs
Bearings and seal installed:
Inner Bearing = 25580
Outer Bearing = 15123
Seal = 22333TB
For use with tapered spindle

BOSS PN: HUBD1009B

12" Electric Backing Plate

Free-Backing
Studs installed

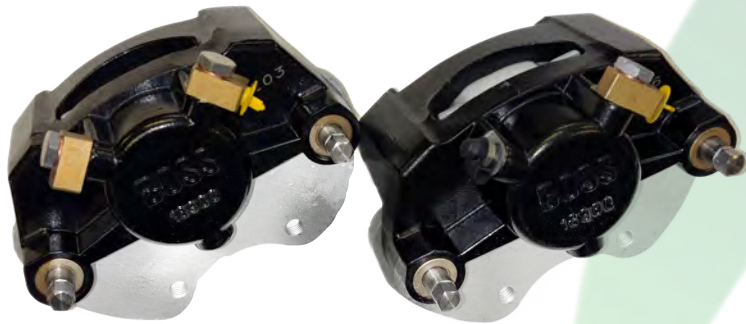
Left Orientation:

BOSS PN: BPE1306B

Right Orientation:

BOSS PN: BPE1307B

DISC BRAKES



Rotor, 9.6"

Cast Iron, Black Painted
1750lb Capacity
Slip-Over Design

BOSS PN: TBD

9.6" Caliper, Two Banjo

Single Piston Caliper
Black-painted aluminum body.

One Bleeder, One Banjo Fitting

BOSS PN: CA1103B

Two Banjo Fittings

BOSS PN: CA1102B



Rotor, 10"

Cast Iron, Black Painted
1750lb Capacity
Slip-Over Design

BOSS PN: HUBR1006B

10" Caliper, Two Banjo

Single Piston Caliper
Black-painted aluminum body.

One Bleeder, One Banjo Fitting

BOSS PN: CA1101B

Two Banjo Fittings

BOSS PN: CA1100B

Boss Trailer Products disc brakes come with all fittings, pads, etc.- Ready to bolt to the brake flange!

BRAKE LINE COMPONENTS

Assembly Tool Required – Build your own Lines!



Fitting, Brass, Line Adaptor
3/8-24 Hex

BOSS PN: BF5002BR



Adaptor, Drum
3/8-24 Hex

BOSS PN: BF5004BR



Sleeve, Brass
1/8" ID

BOSS PN: BF5001BR



Brake Hose, Per Foot
SAE J1481 Certified
1/8" ID

BOSS PN: BH5000



Collar, Brass
Male

BOSS PN: BF5003BR

BRAKE ACTUATORS



Brake Actuator, Drum Brake

6600lb capacity
Black Wrinkle Finish

BOSS PN: ACT3001B

Brake Actuator, Disc Brake

6600lb capacity
Black Wrinkle Finish
With Backup Solenoid

BOSS PN: ACT3000B

Brake Actuator, Drum Brake

6600lb capacity
Zinc Plated Finish

BOSS PN: ACT3004B

Brake Actuator, Disc Brake

6600lb capacity
Zinc Plated Finish
With Backup Solenoid

BOSS PN: ACT3003B



Actuator Rear Cover
To cover disc brake solenoid
Available in Zinc Finish
Screws Included

BOSS PN: ACT3002ZNS

All Boss Trailer Products Brake Actuators are SAE J684 Certified

SWING TONGUE PARTS



Swing Tongue Plate (Weld-On)

- Hole Diameter: .631-.636"
- Hole Centers: 4.50"

BOSS PN: PLST6550P



Swing Tongue Cast Body

Weld-On Cast Iron for 3" Tongue (75)

BOSS PN: BST6560P

Weld-On Cast Iron for 4" Tongue (73)

BOSS PN: BST6561P



Swing Tongue Pivot Pin, Grade 8

- Diameter: .620"-.625"
- Includes Pin and Lanyard

Length: 4 1/2" Nominal for 3" Tongue

BOSS PN: PST6500ZN

Length: 5 1/2" Nominal for 4" Tongue

BOSS PN: PST6502ZN

Length: 6 1/2" Nominal for 5" Tongue

BOSS PN: PST6503ZN



Swing Tongue Bolt, Grade 8

5/8-18 x 4 1/2, for 3" Tongue

BOSS PN: BST6506ZN

5/8-18 x 5 1/2, for 4" Tongue

BOSS PN: BST6507ZN

5/8-18 Nylon Locknut for above bolts

BOSS PN: NST6510ZN



Swing Tongue Kit (Weld-On)

- For 3" Tongue, Includes the Following
- (2) PLST6550P Plates
- (1) BST6560P Body
- (1) PST6500ZN Pin
- (1) BST6506P Bolt
- (1) NST6510ZN Locknut
- (2) 5/8" Washers (not shown)

BOSS PN: STK6523



Swing Tongue Kit (Weld-On)

- For 4" Tongue, Includes the Following
- (2) PLST6550P Plates
- (1) BST6561P Body
- (1) PST6502ZN Pin
- (1) BST6507P Bolt
- (1) NST6510ZN Locknut
- (2) 5/8" Washers (not shown)

BOSS PN: STK6524

STRAIGHT COUPLERS



**Coupler, Class 2 for 3" Tongue
3500lb Capacity, 2"/50mm**

Plain finish, Weld-On (not shown)
BOSS PN: CPS3302P

Zinc Plated Finish, Bolt-On
BOSS PN: CPS3304ZN

Latch Pin Included

**Coupler, Class 3 for 3" Tongue
5000lb Capacity, 2"/50mm**

Plain finish, Weld-On (not shown)
BOSS PN: CPS3303P

Zinc Plated Finish, Bolt-On
BOSS PN: CPS3305ZN

Latch Pin Included

**Coupler, Class 4 for 3" Tongue
6000lb Capacity, 2"/50mm**

Zinc Plated Finish, Bolt-On
BOSS PN: CPS3306ZN

Latch Pin Included

**Coupler, for 3" Tongue
8000lb Capacity, 2 5/16"**

Zinc Plated Finish, Bolt-On
BOSS PN: CPS3307ZN

Latch Pin Included

All Boss Trailer Products Couplers are SAE J684 Certified

A-FRAME COUPLERS



Coupler, A-Frame 5000lb Class 3
Plain Finish, Zinc Latch – Weld On
2" Ball, 50 degree

BOSS PN: CPA3330P

Coupler, A-Frame 10,000lb
Plain Finish – Weld On
2 5/16" Ball, 50 degree

BOSS PN: CPA3331P

Coupler, A-Frame 14,000lb
Plain Finish – Weld On
2 5/16" Ball, 50 degree

BOSS PN: CPA3336P

Coupler, A-Frame 5000lb Class 3
Zinc Plated Finish, Bolt-On
2" Ball, 50 degree

BOSS PN: CPA3333ZN

Coupler, A-Frame 14,000lb
Plain Finish – Weld On
2 5/16" Ball, 50 degree

BOSS PN: CPA3337ZN

All Boss Trailer Products Couplers are SAE J684 Certified

SWING AWAY JACKS



Jack, Swing Away 1000lb
Bolt-On, Snap Ring to Swivel
6" Wheel Zinc Plated
BOSS PN: JSA3050ZN



Jack, Swing Away 1200lb
Weld-On, Four Bolt to Swivel
6" Wheel Zinc Plated
BOSS PN: JSA3054ZWN



Jack, Swing Away 1200lb
Weld-On, Four Bolt to Swivel
6" Wheel Black Painted Finish
BOSS PN: JSA3057B



Jack, Swing Away 1200lb
Bolt-On, Four Bolt to Swivel
6" Wheel Zinc Plated
BOSS PN: JSA3051ZN



Jack, Swing Away 1500lb
Weld-On, Four Bolt to Swivel
8" Wheel Zinc Plated
BOSS PN: JSA3055ZWN



Jack, Swing Away 1500lb
Weld-On, Four Bolt to Swivel
8" Wheel Black Painted Finish
BOSS PN: JSA3058BW



Jack, Swing Away 1500lb
Bolt-On, Four Bolt to Swivel
8" Wheel Zinc Plated
BOSS PN: JSA3052ZN



Jack, Swing Away 1500lb
Bolt-On-On, Four Bolt to Swivel
6" Double Wheel Zinc Plated
BOSS PN: JSA3053ZN



Jack, Swing Away 1300lb
Bolt-On, Four Bolt to Swivel
6" Wheel Zinc Plated
LONG VERSION (12" Travel)
BOSS PN: JSA3044ZN

LONG VERSION (14" Travel)
BOSS PN: JSA3059ZN

All Boss Trailer Products jacks have 10" travel unless otherwise specified

NEW! SWIVEL SWING AWAY JACKS



Jack, Swing Away 1200lb
Bolt-On, Four Bolt to Swivel
6" Wheel Zinc Plated
BOSS PN: JSA3031ZN

Jack, Swing Away 1200lb
Weld-On, Four Bolt to Swivel
6" Wheel Zinc Plated
BOSS PN: JSA3034ZNW

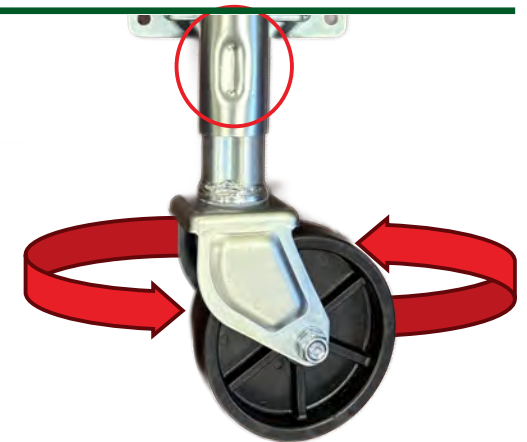
Jack, Swing Away 1500lb
Bolt-On, Four Bolt to Swivel
8" Wheel Zinc Plated
BOSS PN: JSA3032ZN

Jack, Swing Away 1500lb
Weld-On, Four Bolt to Swivel
8" Wheel Zinc Plated
BOSS PN: JSA3035ZNW

New, from Boss Trailer Products is our Swivel Swing Away Jack- available in 1200lb and 1500lb 8" wheel versions.

The body is pinned- no more holding the wheel to crank the jack down!

The swivel is in the yoke of the jack.



All Boss Trailer Products jacks have 10" travel unless otherwise specified

A-FRAME JACKS



Jack, A-Frame 2000lb
Bolt-On A-Frame, Top Wind
Foot Sold Separately
Black Painted

BOSS PN: JAF3060B

Jack, A-Frame 5000lb
Bolt-On A-Frame, Top Wind
Foot Sold Separately
Black Painted

BOSS PN: JAF3061B



Foot- A-Frame Jack
For A-Frame Jacks
Includes bolt and nut

Zinc Plated
BOSS PN: JF3095ZN



Wheel- A-Frame Jack
For A-Frame Jacks
Includes retaining pin

Zinc Plated
BOSS PN: JW3097ZN

DROP LEG JACKS



Jack, Drop Leg 2500lb
Bolt-On
Zinc Pinned Foot
Zinc Plated

BOSS PN: JDL3080ZN

Jack, Drop Leg 5000lb
Bolt-On
Zinc Pinned Foot
Zinc Plated

BOSS PN: JDL3081ZN



Jack, Drop Leg 5000lb
Weld-On, Side Wind
Zinc Pinned Foot
Black Painted Body

BOSS PN: JDL3086B

Jack, Drop Leg 7000lb
Weld-On, Side Wind
Zinc Pinned Foot
Black Painted Body

BOSS PN: JDL3087B



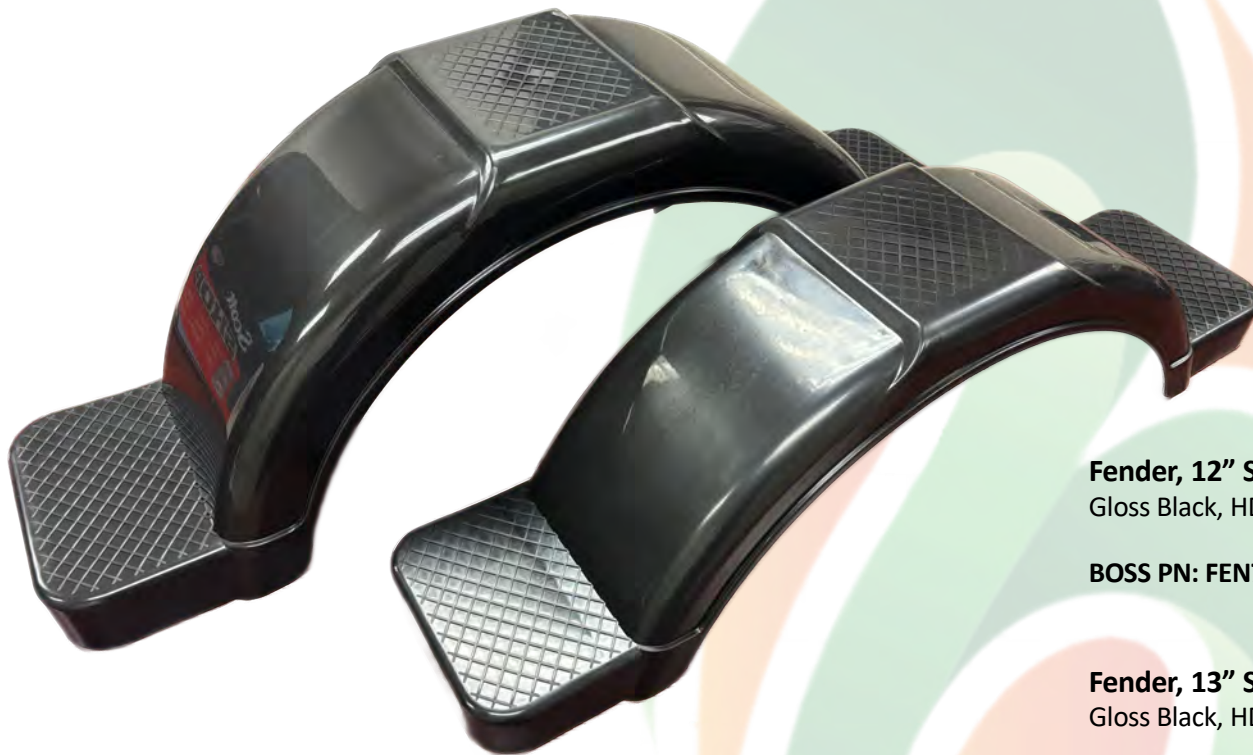
U-Bolt Mount Kit, 3x5 Rail
Comes with (2) U-Bolts, (4)
Flat Washers and (4) Nylon
Locknuts

BOSS PN: UBK5703ZN

U-Bolt Mount Kit, 3x6 Rail
Comes with (2) U-Bolts, (4)
Flat Washers and (4) Nylon
Locknuts

BOSS PN: UBK5704ZN

FENDERS



Over 80"
Applications:
Fender Lights will
work on the radius.
Shown is the
Optronics
MCL10/MCL11
Style of light with a
 $\frac{3}{4}$ " drilled hole

Fender, 12" Standard with Steps

Gloss Black, HD Polypropylene

BOSS PN: FEN7051B

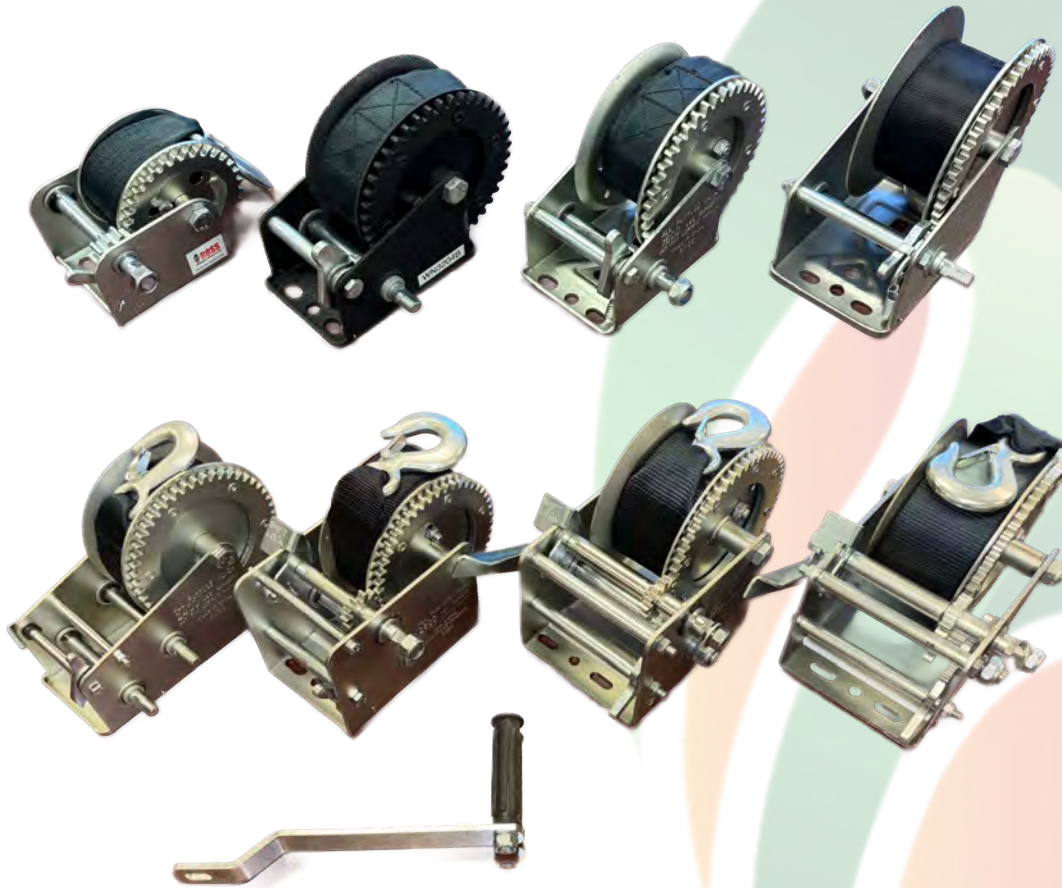
Fender, 13" Standard with Steps

Gloss Black, HD Polypropylene

BOSS PN: FEN7050B

The Boss Trailer Product fender is made from durable, long lasting Black Polypropylene.

BOAT WINCHES



Winch, 900lb
With 14' Strap
Zinc Plated
BOSS PN: WN3201ZN

Winch, 900lb
NO Strap
Zinc Plated
BOSS PN: WN3201ZNLS

Winch, 1500lb
With 20' Strap
Zinc Plated
BOSS PN: WN3205ZN

Winch, 1500lb
With 20' Strap
BLACK wrinkle finish
BOSS PN: WN3204B

Winch, 1800lb
With 20' Strap
Zinc Plated
BOSS PN: WN3209ZN

Winch, 2400lb
With 33' Strap
Two Speed (two shaft)
Zinc Plated
BOSS PN: WN3214ZN

Winch, 2600lb
With 33' Strap
Shifting Two Speed
Zinc Plated
BOSS PN: WN3214ZN

Winch, 3200lb
With 33' Strap
Shifting Two Speed, w/Brake
Zinc Plated
BOSS PN: WN3213ZN

Winch, 3700lb
With 33' Strap
Shifting Two Speed, w/Brake
Zinc Plated
BOSS PN: WN3215ZN

All Boss Trailer Products Winches come with Handles, different lengths available!

BOW ROLLERS



4" Bow Roller
Yellow Poly
Use with 1/2" Bolt

BOSS PN: RL7122YP

4" Bell End Caps
Yellow Poly
Use with 1/2" Bolt

BOSS PN: RL7123YP



4" Bow Roller
Black Rubber
Use with 1/2" Bolt

BOSS PN: RL7120R

Boss Trailer Products Winches specializes in custom roller design for high volume applications.

KEEL ROLLERS



5" Keel Roller
Black Rubber
Use with 5/8" Shaft
BOSS PN: RL7100BR



8" Keel Roller
Black Rubber
Use with 5/8" Shaft
BOSS PN: RL7101BR

10" Keel Roller
Black Rubber
Use with 5/8" Shaft
BOSS PN: RL7104BR



12" Keel Roller
Black Rubber
Use with 5/8" Shaft
BOSS PN: RL7103BR

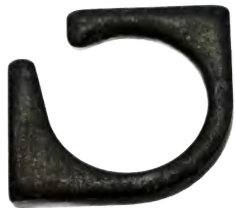


12" Keel Roller
Yellow Poly
Use with 3/4" Shaft
BOSS PN: RL7113YP

ASSEMBLY ITEMS



CONNECTOR, SELF STRIPPING
MOISTURE PROOF
3 Wire, 22-14 AWG
Compare to ScotchLok #314
BOSS PN: ECSS4000



WIRE LOOM / BRAKE LINE TAB
Use this in place of that ½" washer
for a cleaner finish!

Plain Finish
BOSS PN: TAB6900P